

Triplexed DAS Interface Tray

Tel: 201-342-3338

Fax: 201-342-3339

www.cciprducts.com

General Information

PRELIMINARY



Need photograph of "Triplexed DAS Tray" when Available

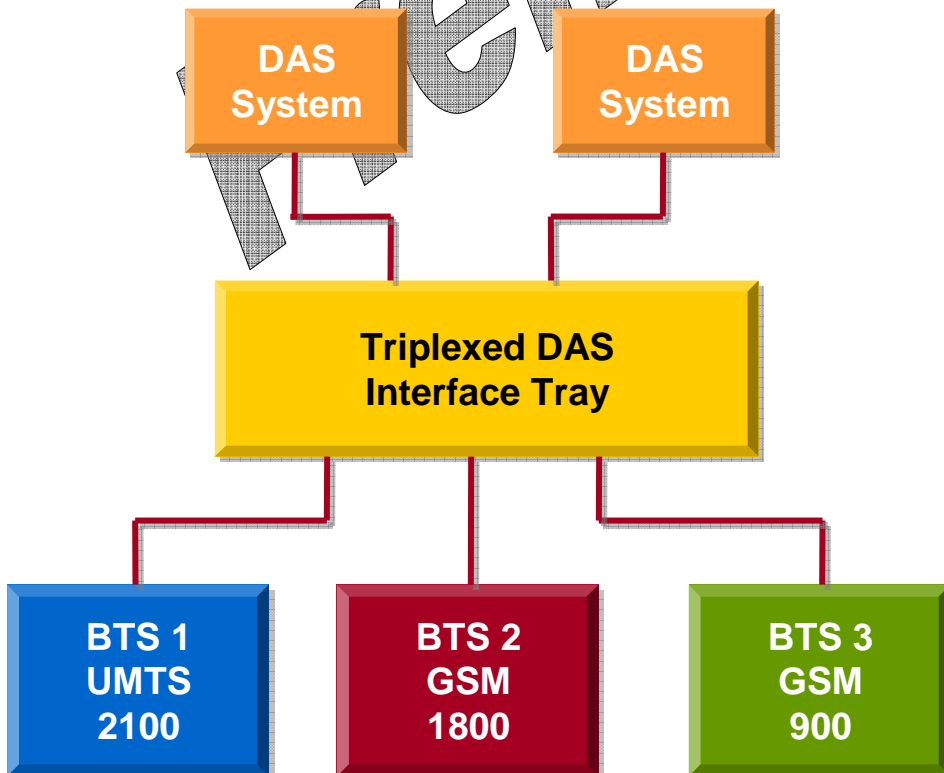
CCI's Triplexed DAS Interface Tray provides an integrated, convenient, and single connection point when using multiple base

stations with coaxial DAS systems. Up to three BTS technologies with two TX/RX channels each can be connected simultaneously. Base stations are connected directly to the Triplexed DAS Interface Tray, and the full BTS power is combined with minimal losses and provided to the coaxial DAS System on two balanced ports. Receive diversity is also preserved from the DAS System to the BTS. The Triplexed DAS Tray is a passive assembly with no power required.

Model **DAST-900-1800-2100**

Contents

General Information	1
Electrical & Mechanical Specifications	2
Outline Drawing	3
Ordering Information	3



Key Features:

- ◆ A common connection point for Multiple Base stations to a single DAS system
- ◆ Combines Multiple BTS Technologies onto a single DAS System
- ◆ Combines Multiple Radios (TX/RX) thru the use of Hybrid Combiners
- ◆ Receive Diversity Preserved
- ◆ Minimal losses provide BTS Power to Balanced DAS ports
- ◆ Passive system

Triplexed DAS Interface Tray Typical Specifications

Description	Typical Specifications
RF Electrical	
Operating Frequency Range	880 - 960 MHz (GSM 900)
	1710 - 1880 MHz (GSM 1800)
	1920 - 2170 MHz (UMTS 2100)
Insertion Loss	
GSM 900 Channel	0.6 dB Typ. (3.6 dB each connection to DAS)
GSM 1800 Channel	0.6 dB Typ. (3.6 dB each connection to DAS)
UMTS 2100 Channel	0.6 dB Typ. (3.6 dB each connection to DAS)
Return Loss	
GSM 900 Channel	17.0 dB Min.
GSM 1800 Channel	17.0 dB Min.
UMTS 2100 Channel	17.0 dB Min.
DAS Input/Output	17.0 dB Min.
Power Handling	
GSM 900 Channel	240 Watts, 1000 Watts Peak Max.
GSM 1800 Channel	240 Watts, 1000 Watts Peak Max.
UMTS 2100 Channel	150 Watts, 1000 Watts Peak Max.
Mechanical	
Number of BTS Inputs	6 (5 useable, 1 Loaded)
GSM 900 Inputs	2: TX/RX (N-Female)
GSM 1800 Inputs	2: TX/RX (N-Female)
UMTS 2100 Inputs	1: TX/RX (N-Female); 1: High Power Load (N-Female)
Number of DAS Connections	2: TX/RX Input/Output (N-Female)
Dimensions	2U - 88.9 mm (3.5") H x 482.6mm (19") W (Rack Mount Tray)
Weight	13 kg (28.6 Pounds)
Environmental	
Operating Temperature Range	-10° C to +65° C
Protection	Indoor

PRELIMINARY

CCI Confidential

Communication Components Inc.

Tel: 201-342-3338

Fax: 201-342-3339



89 Leuning Street
South Hackensack, NJ 07606
Tel: 201-342-3338
Fax: 201-342-3339
WWW.CCIPRODUCTS.COM

PRELIMINARY

Ordering Information:

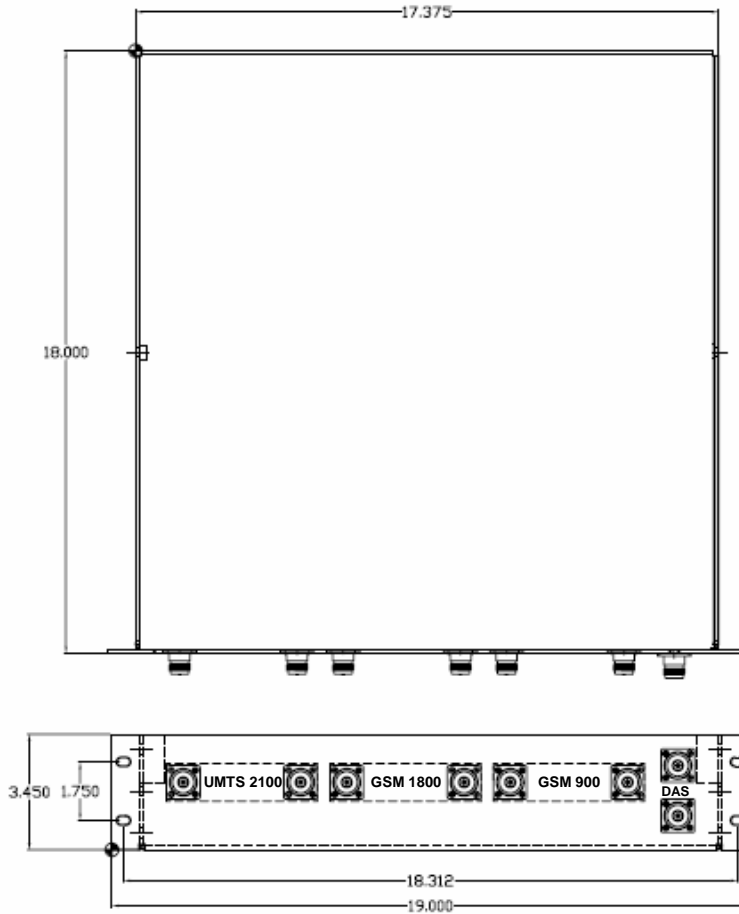
◆ **Model DAST-900-1800-2100**

Options:

Accessories:

PREVIEW

Triplexed DAS Interface Tray Outline Drawing



CCI Confidential

Communication Components Inc.

Tel: 201-342-3338

Fax: 201-342-3339